



## Consistent Color Every Time

Coloring mortar accurately and consistently is only achieved by preblending all mortar constituents and pigments using computer batching systems, while adhering to a specialized process. Over 20 years ago the SPEC MIX organization introduced this technological approach for colored masonry mortars to the construction industry, and it continues to perfect this process. SPEC MIX colored mortar uniformity starts with sourcing high quality, stable pigments that are pre-weighed to ensure the colorant loading meets each specific formulation for our standard and custom colored mortars. Then, all the ingredients are weighed and preblended to achieve a homogeneous mixture. And, when building owners and designers want a unique color that supports their vision for a project, the options for custom SPEC MIX colored mortars are endless and consistent from batch to batch.

### SPEC MIX BC Standard Colours



White (SM200)



Snowflake



Desert White



Tanglewood (SM270)



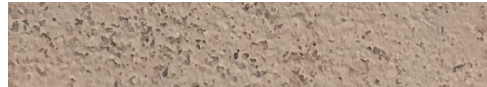
Buff



Plain



Medium Buff (SM400)



Tan



Sandstone



Amber (SM610)



Ebony



Charcoal

\* The sample colors shown are provided to demonstrate the colors available. THE SAMPLE COLORS ARE ONLY APPROXIMATE. Variation in color, shades of color, texture, and aggregate exposure is inherent in all masonry mortars and exact matches cannot be guaranteed.



**SPEC MIX®** Portland Lime & Sand mortar is a dry pre-blended mortar mix containing Portland cement, hydrated lime and dried masonry sand formulated for superior bond, water retention and board life. To be used with the various patented SPEC MIX silo systems.

#### Available In:

- 36 kg (80 lb) 42 bags/pallet
- ~1360 kg Bulk Bag 1/pallet

#### FEATURES:

- Preblended with sand to minimize labour costs.
- Consistency batch to batch.
- Great workability and board life.
- No sand piles or wasted materials left on site.
- Colours available.
- Meets CSA A179 requirements.



**SPEC MIX®** Polymer Modified Adhered Veneer Mortar is a technologically advanced adhered veneer mortar for use in bonding adhered manufactured stone veneer, natural thin cut stone and thin brick to a cementitious substrate. PMSVM is designed to provide excellent workability, cohesion, high bond strength, sag resistance, water resistance, efflorescence minimization, and durability.

#### Available In:

- 36 kg (80 lb) 42 bags/pallet
- ~1360 kg Bulk Bag 1/pallet

#### FEATURES:

- In applications where mortar joints are not utilized, such as dry stack applications, SPEC MIX PMSVM should be used to gain additional bond strength and “pop-off” protection.
- Installing natural thin cut stone veneer is aided by the unique anti-sag and high bond properties of SPEC MIX PMSVM.
- In addition to custom mix designs that are available for specific applications or properties, the SPEC MIX Polymer Modified Stone Veneer Mortar is designed to be compatible with the characteristics of most all specified adhered masonry veneer units.
- Meets CSA A179 requirements.

## SPEC MIX Custom Colored Mortar

The beauty of masonry is that it can be designed and built as a customized system offering endless options to compliment most any architectural vision. The unique SPEC MIX custom colored mortar selection process supports this vision with the ability to produce nearly any color imaginable to achieve the complete masonry appearance desired. Whether it's matching mortars from existing buildings to picking colors from a spectrum of options, we deliver uniform, consistent colored mortar from project start to finish. To start the process of SPEC MIX custom color matching, contact your local SPEC MIX representative today.