

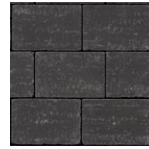
Village Series



SINGLE COLOURS



Natural Grey



Charcoal



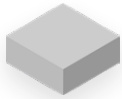
Sierra Beige

BLENDED COLOURS



Winter Sky

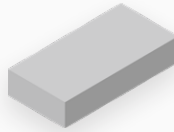
Sizes



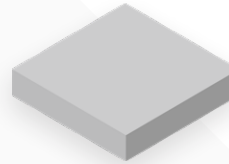
6" x 6" x 2-3/8"
151mm x 151mm x 60mm
Including 3 mm Spacer Bars
Area: 4 stones/ft²
43 stones/m²



6" x 9" x 2-3/8"
151mm x 227mm x 60mm
Including 3 mm Spacer Bars
Area: 2.6 stones/ft²
28 stones/m²



6" x 12" x 2-3/8"
151mm x 304mm x 60mm
Including 3 mm Spacer Bars
Area: 2 stones/ft²
21.5 stones/m²



12" x 12" x 2-3/8"
304mm x 304mm x 60mm
Including 3 mm Spacer Bars
Area: 1 stones/ft²
10.75 stones/m²

RECOMMENDED APPLICATIONS



Pedestrian



Walkways

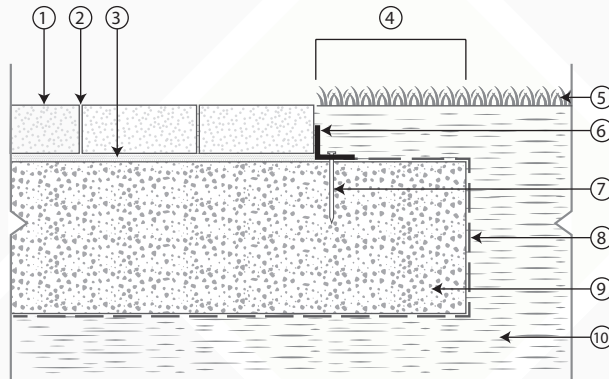


Residential Driveway/Parking

Installation

SAND SET

- 1 Standard Paver
- 2 Sand joint fill
- 3 Bedding Sand 1"
- 4 Extra width equal to foundation thickness
- 5 Lawn
- 6 Plastic edge or other type of edge restraint
- 7 Nail
- 8 Geotextile (optional)
- 9 Compacted aggregate base with 3/4" minus material
- 10 Subgrade



Specifications

Pavers are manufactured to ASTM C936 and CSA A231.2-06 specifications.

CONCRETE STRENGTH

8000 PSI (55 MPA)

ABSORPTION

Shall not exceed 5%

WEIGHT

2-3/8 (60 mm): approx. 26.8 lbs/ft² (130kg/m²)