

Standard Series



SINGLE COLOURS



Natural Grey



Charcoal

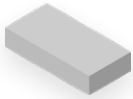
BLENDED COLOURS



Northern Shadow

Sizes

STANDARD



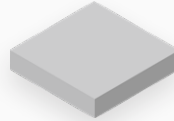
8-7/8" x 4-7/16" x 2-3/8"
225mm x 112.5mm x 60mm
Including 3 mm Spacer Bars
Area: 3.7 stones/ft² – 39.5 stones/m²

HALF



4-7/16" x 4-7/16" x 2-3/8"
112.5mm x 112.5mm x 60mm
Including 3 mm Spacer Bars
Area: 7.3 stones/ft² – 79 stones/m²

DOUBLE



8-7/8" x 8-7/8" x 2-3/8"
225mm x 225mm x 60mm
Including 3 mm Spacer Bars
Area: 1.8 stones/ft² – 20 stones/m²

RECOMMENDED APPLICATIONS



Pedestrian



Walkways

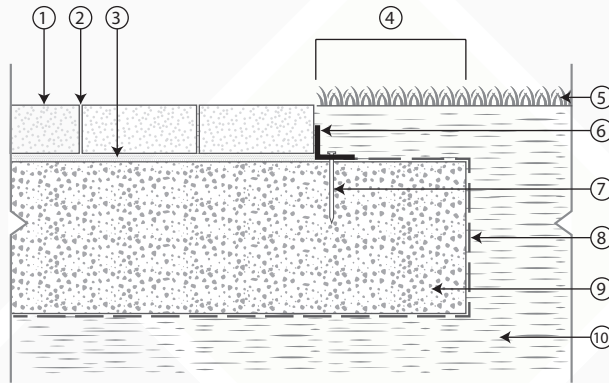


Residential Driveway/Parking

Installation

SAND SET

- 1 Standard Paver
- 2 Sand joint fill
- 3 Bedding Sand 1"
- 4 Extra width equal to foundation thickness
- 5 Lawn
- 6 Plastic edge or other type of edge restraint
- 7 Nail
- 8 Geotextile (optional)
- 9 Compacted aggregate base with 3/4" minus material
- 10 Subgrade



Specifications

Pavers are manufactured to ASTM C936 and CSA A231.2-06 specifications.

CONCRETE STRENGTH

8000 PSI (55 MPA)

ABSORPTION

Shall not exceed 5%

WEIGHT

2-3/8 (60 mm): approx. 26.8 lbs/ft² (130kg/m²)