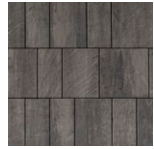


Coastal Slate



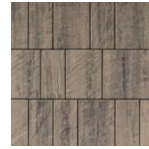
BLENDED COLOURS



Winter Sky

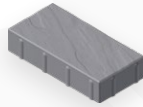


Galaxy

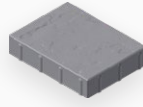


Birchwood

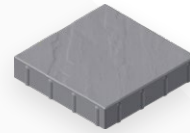
Sizes



6" x 12" x 2-3/8"
151 mm x 304 mm x 60 mm
Including 3 mm Spacer Bars



9" x 12" x 2-3/8"
228 mm x 304 mm x 60 mm
Including 3 mm Spacer Bars



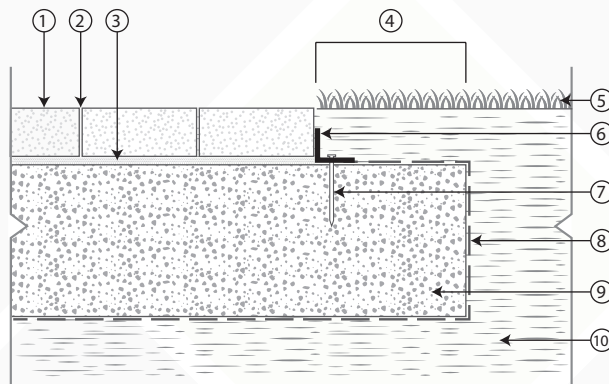
12" x 12" x 2-3/8"
304 mm x 304 mm x 60 mm
Including 3 mm Spacer Bars

All 3 sizes in one Layer as shown above. There is a different slate texture on every stone. Area for 1 Layer: 12/ft² – 1.11/m²

Installation

SAND SET

- 1 Standard Paver
- 2 Sand joint fill
- 3 Bedding Sand 1"
- 4 Extra width equal to foundation thickness
- 5 Lawn
- 6 Plastic edge or other type of edge restraint
- 7 Nail
- 8 Geotextile (optional)
- 9 Compacted aggregate base with 3/4" minus material
- 10 Subgrade



RECOMMENDED APPLICATIONS



Pedestrian



Walkways



Residential Driveway/Parking

Specifications

Pavers are manufactured to ASTM C936 and CSA A231.2-06 specifications.

CONCRETE STRENGTH

8000 PSI (55 MPA)

ABSORPTION

Shall not exceed 5%

WEIGHT

2-3/8 (60 mm): approx. 26.8 lbs/ft² (130kg/m²)